



# TALLAHASSEE INTERNATIONAL AIRPORT



## TLH AIR CARGO

YOUR GLOBAL GATEWAY TO NORTHWEST FLORIDA



CITY OF  
TALLAHASSEE



TALLAHASSEE INTERNATIONAL  
JAN MUNROE TERMINAL



ELEVATOR  
TO TERMINAL



# TLH BACKGROUND



The Tallahassee International Airport (TLH) is located in Tallahassee, Florida, the capital city of Florida. TLH is owned, operated, and managed by the City of Tallahassee. Situated in Leon County, the Airport is only a six (6) mile drive from downtown Tallahassee and the Florida State Capitol and five (5) miles from Interstate 10.



TLH is included in the national airport system by the National Plan of Integrated Airport Systems (NPIAS) and is designated a Non-hub Primary Commercial Service Airport by the Federal Aviation Administration (FAA). TLH is a 2,485-acre site with two (2) all-weather non-intersecting paved runways, full-length parallel taxiways, three (3) general aviation (GA) aprons, a commercial aircraft apron, and an air cargo apron with all-weather, 24-hour operations. TLH has uncongested airspace which facilitates operations for carriers.



Serving the state capital, TLH supports a full range of commercial, military, and GA activities. The Airport has 485+ acres of developable land available for cargo, freight, logistics and supporting businesses on property. GA aircraft, pilots, and their passengers are supported by two (2) fixed-base operators (FBOs), Aero Center Tallahassee and Million Air Tallahassee. Multiple specialized aviation service operators are also located at the Airport. FedEx currently operates daily flight operations to support its network with three (3) aircraft that are integral to its system. FedEx also operates a regional sortation system at TLH for their local and regional cargo volumes. TLH is working on plans to expand the air cargo apron to accommodate additional cargo parking for up to two (2) additional Boeing 757-200 aircraft.



The population of the Tallahassee Metropolitan Statistical Area (MSA) is approximately 398,000 residents. Nearly 1.5 million people reside within a 90-mile radius of the Airport, and TLH serves a diverse population in a thirty-four (34)-county area encompassing North Florida, Southwest Georgia and Southeast, Alabama. The dollar value of TLH's annual economic impact is nearly \$859 million to the region.

# WHY TALLAHASSEE?



As the capital of the third most populous state in the U.S., Tallahassee-Leon County is home to three major institutions of higher learning, world-class research institutes, and a host of companies, large and small. Home to beautiful, natural landscapes, the City of Tallahassee is committed to ensuring that the quality of life afforded by these resources continues for future generations.



Capital of the  
State of Florida



Major Hub for  
Higher Education



Guided by  
Sustainable Policies

# COMMERCIAL AIR SERVICE

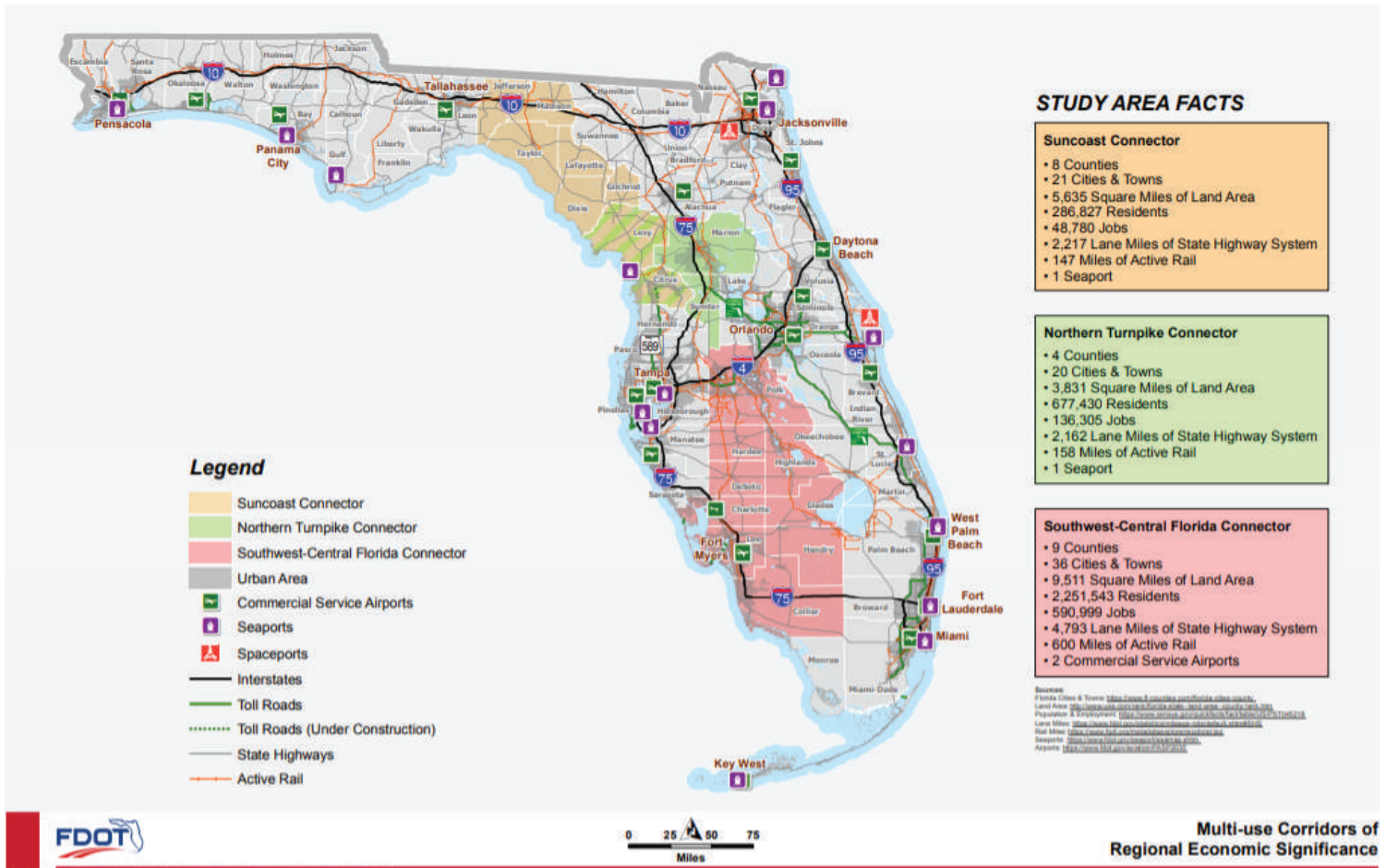
TLH offers daily non-stop passenger flights with commercial air service to eight (8) major hubs, with connections to virtually every major global destination.



TLH is served by four (4) airlines: American Airlines, Delta Air Lines, JetBlue Airways, and Silver Airways, along with six (6) affiliate airlines: Endeavor Air, Envoy, Mesa Airlines, PSA Airlines, Piedmont Airlines, and SkyWest Airlines. These airlines provide non-stop service to Atlanta (ATL), Charlotte (CLT), Dallas-Ft. Worth (DFW), Fort Lauderdale (FLL), Miami (MIA), West Palm Beach (PBI), Tampa (TPA), and Washington, D.C.(DCA).

In FY 2023, airlines at TLH provided service to 836,790 total passengers.

# REGIONAL MAPS



## Florida Interstate and U.S. Highways, Railroad and Airports Map

# REGIONAL MAPS



Florida Districts and Seaports Map



# LARGE PARCEL MAP



## Parcels

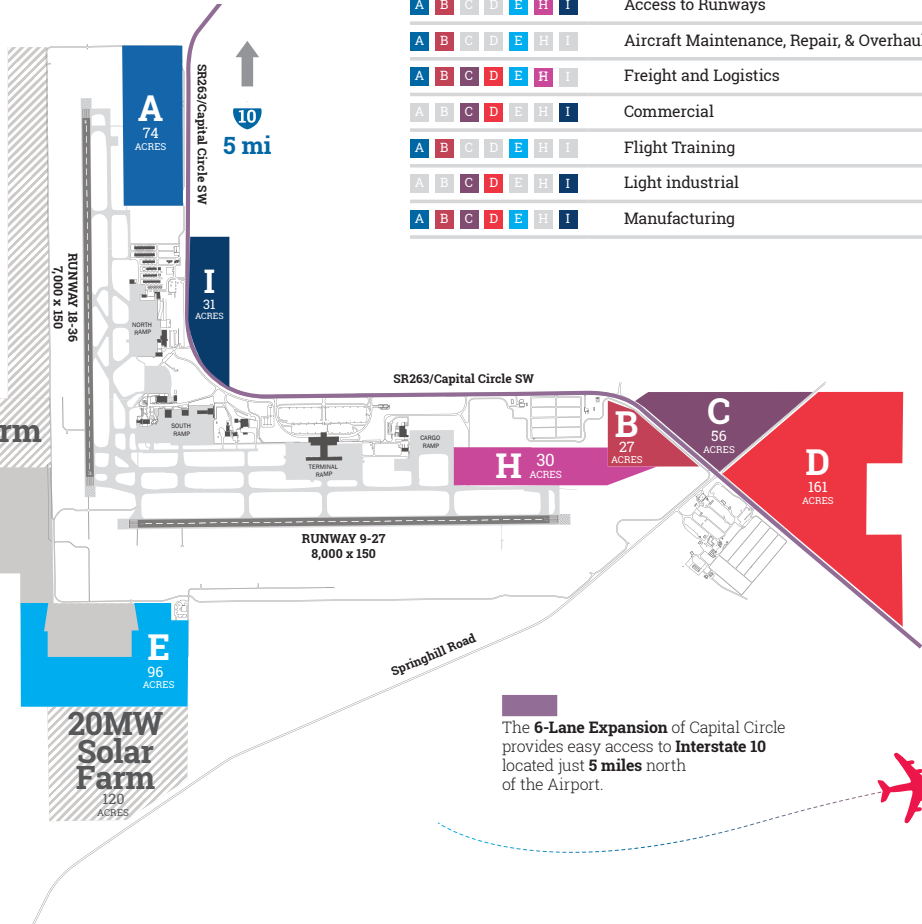


**42MW Solar Farm**  
330,262 ACRES

### PRO-BUSINESS ADVANTAGES

- Freight, Logistics and Distribution
- Manufacturing
- Aviation and Aerospace
- Research and Development (R&D)
- Aircraft Maintenance (A&P)
- Workforce Development

**20MW Solar Farm**  
120 ACRES



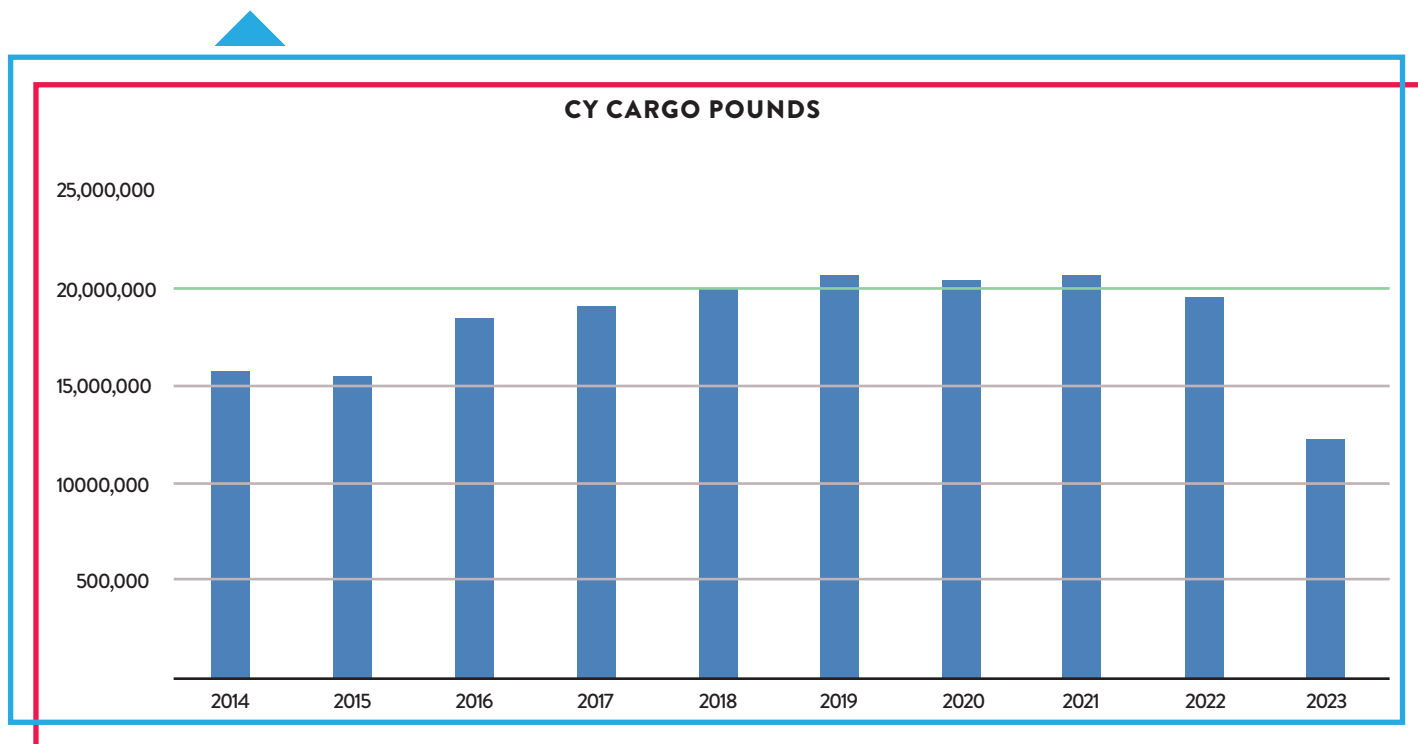
A	B	C	D	E	H	I	Access to Runways
A	B	C	D	E	H	I	Aircraft Maintenance, Repair, & Overhaul (MRO)
A	B	C	D	E	H	I	Freight and Logistics
A	B	C	D	E	H	I	Commercial
A	B	C	D	E	H	I	Flight Training
A	B	C	D	E	H	I	Light industrial
A	B	C	D	E	H	I	Manufacturing

The **6-Lane Expansion** of Capital Circle provides easy access to **Interstate 10** located just **5 miles** north of the Airport.



# EXISTING AIR CARGO OPERATIONS

FedEx is the Airport's existing cargo carrier and leases 200,160 square feet of apron for parking and maneuvering aircraft. TLH's annual total cargo (enplaned and deplaned) in FY 2023 was 18,807,194 million pounds. TLH's air cargo volume in pounds for the past ten (10)-year CY period is shown below:

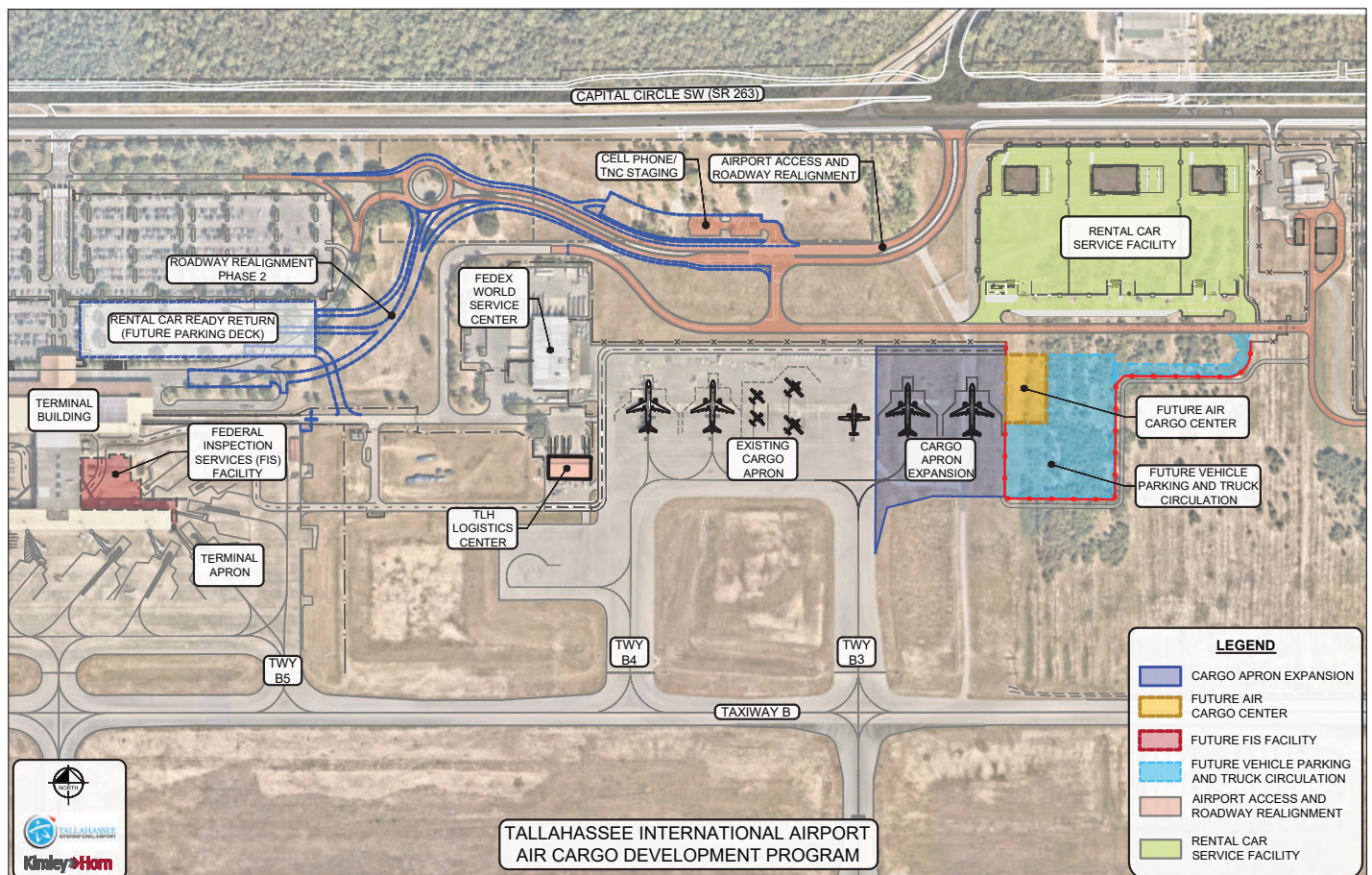


# TLH CARGO SITE DEVELOPMENT / EXPANSION PLANS

TLH is the Northwest Florida Region's primary cargo facility and is committed to expanding and sustaining its support of air cargo services worldwide. The Airport is well positioned to serve its growing economy's transportation/logistics needs.

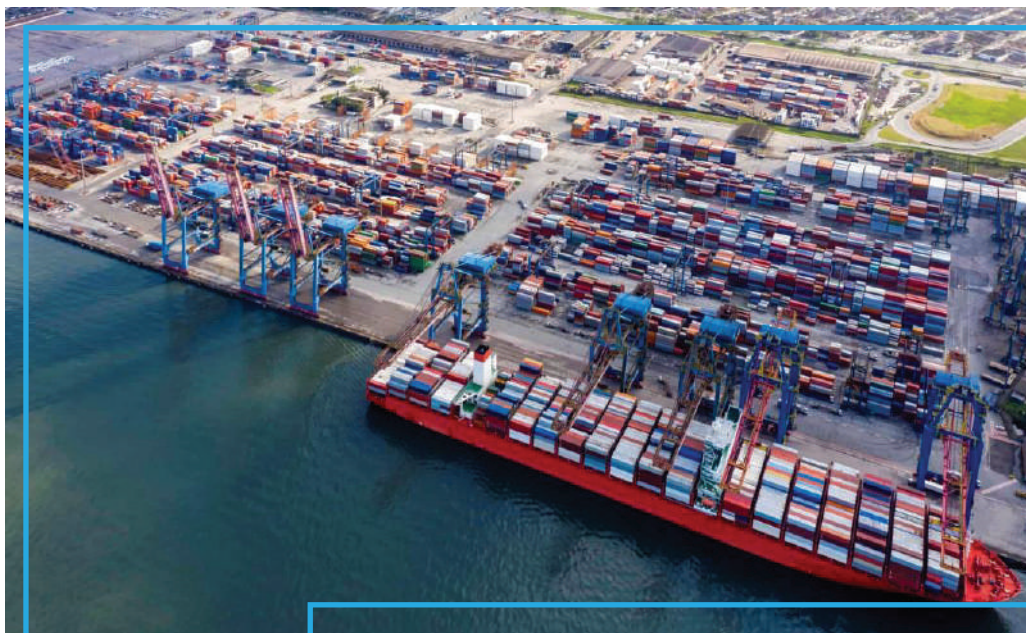
Plans are currently underway to expand the existing air cargo apron at TLH. Future plans include the development of approximately ten (10) acres of apron space and one hundred eight thousand (108,000) square feet of building space. The expanded cargo apron will share apron access with FedEx. TLH will also upgrade a legacy cargo facility to support the requirements of future air cargo needs including cross-border and e-commerce packages. The upgraded TLH Logistics Center will be completed and ready to support new air cargo and future Foreign Trade Zone operations in 2024.

TLH's draft Airport Layout Plan, which is pending FDOT approval, is available on the Airport's website at [TLHAirport.com](http://TLHAirport.com).



# CARGO SITE ACCESSIBILITY

TLH's cargo site is located in Florida's Panhandle and is conveniently situated approximately five (5) miles from Interstate 10, a major east-west transportation route that spans from Jacksonville, Florida to Los Angeles, California. TLH is approximately a ninety (90)-minute drive to north-south Interstate 75. Airport properties have direct access onto SR 263 (Capital Circle SW), which is currently being expanded from two (2) to six (6) lanes, providing easy access to Port St. Joe, Panama City, Port of Jacksonville, and CSX Rail.



# AIRFIELD CHARACTERISTICS

TLH is a 2,485-acre site with two (2) all-weather non-intersecting runways, full-length parallel taxiways, three (3) general aviation aprons, a commercial aircraft apron, and a cargo apron with all-weather, 24-hour operations.

Runway 9-27, TLH's primary runway, is an 8,000 X 150-foot grooved asphalt runway with 25-foot paved shoulders, in good condition. The runway is marked for precision approaches at both ends. The runway has a Category II Instrument Landing System (ILS) with High Intensity Runway Lights (HIRL), both edge and centerline lights, Touchdown Zone Lights (TDZ), and an Approach Light System with Sequenced Flashing Lights (ALSF 2) on the Runway 27 end. There are also Precision Approach Path Indicators (PAPIs) on both ends. The runway has a full-length parallel taxiway with six (6) connector taxiways. The taxiways have full-length centerline lights and edge lights where needed for additional safety. All connectors have in-pavement sequenced flashing runway guard lights to help prevent runway incursions.

Runway 18-36 is a 7,000 X 150-foot grooved asphalt runway with 25-foot paved shoulders. The runway is marked for precision approaches at both ends. The runway has a Category I ILS, with HIRL on the edge only, and a Medium Intensity Approach Light System with Runway Alignment Indicators (MALSR) on Runway 36. There are also PAPIs on both runway ends. The runway has a full-length parallel taxiway with ten (10) connector taxiways which have full-length edge lights.

TLH obtained its Federal Aviation Regulations (FAR) Part 139 Certification in May 1973 and undergoes an annual inspection by the FAA to keep the certification current.

# AIRFIELD CHARACTERISTICS



There are eight (8) IFR approaches to the various runways including:

- ILS Cat II Runway 27
- ILS Cat I Runway 36
- VOR/DME or TACAN Runway 36
- VOR Runway 18
- RNAV/GPS (LPV) Runway 9
- RNAV/GPS (LPV) Runway 18
- RNAV/GPS (LPV) Runway 27
- RNAV/GPS (LPV) Runway 36

# UTILITIES AND SUSTAINABILITY

The City of Tallahassee owns and operates utility services including water, wastewater, natural gas, and electric. As an industry leader, the City is committed to providing the highest level of utility services and to being a proponent of environmental stewardship which includes the addition of 62 MW of solar power located on airport property at TLH.

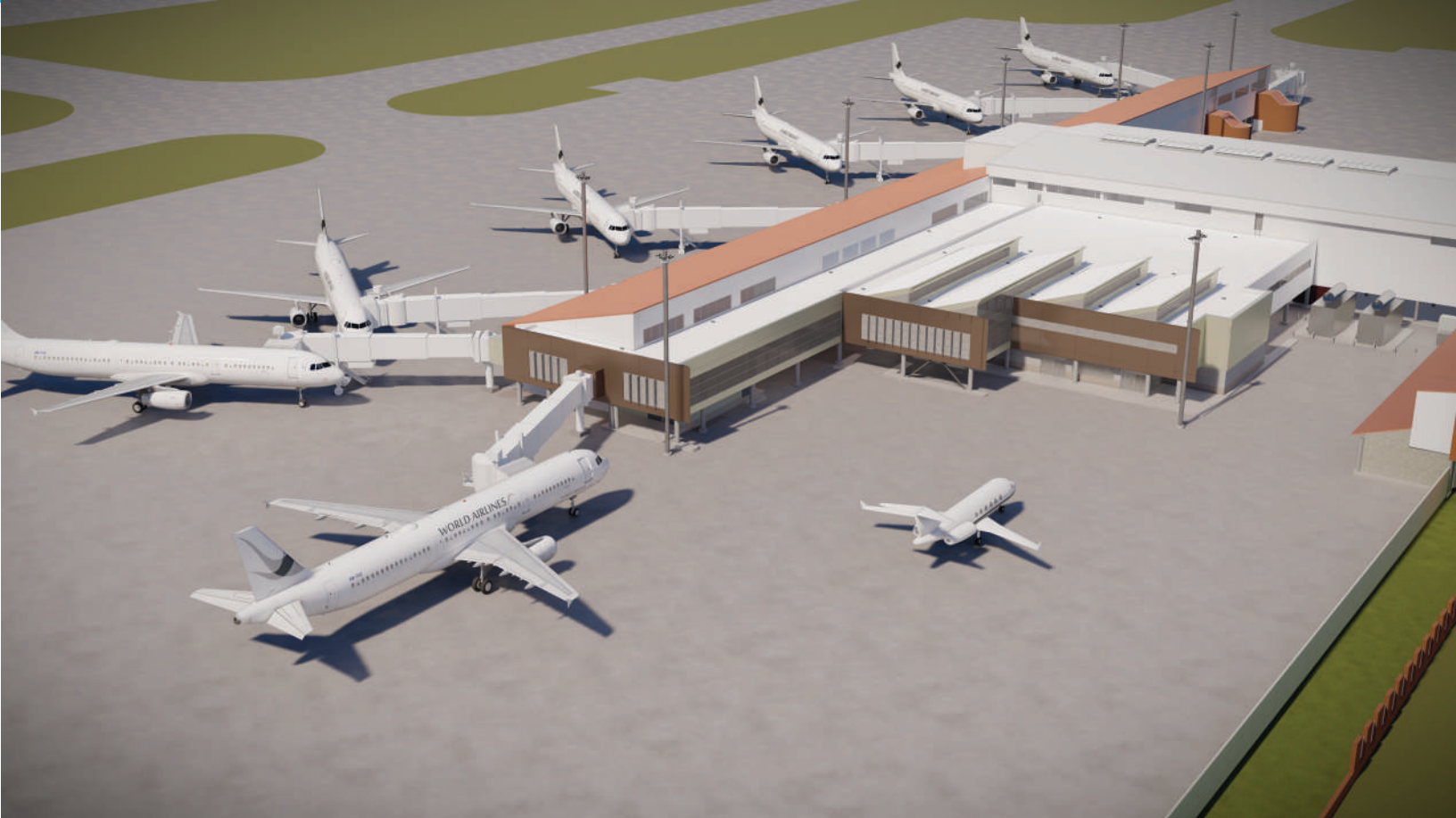
This affords TLH and our tenants the option of having 100% of electrical needs met with renewable solar power. The solar power generation at TLH is currently the largest on-airport solar array in the United States and is an important part of the TLH commitment to sustainability and reaching net-zero emissions.



Solar 1 2018	Solar 2 2020	Total
120 acres	330 acres	450 acres
20 MWac	42 MWac	62 MWac



# FEDERAL INSPECTION SERVICES (FIS) FACILITY AND FUTURE FOREIGN TRADE ZONE (FTZ)

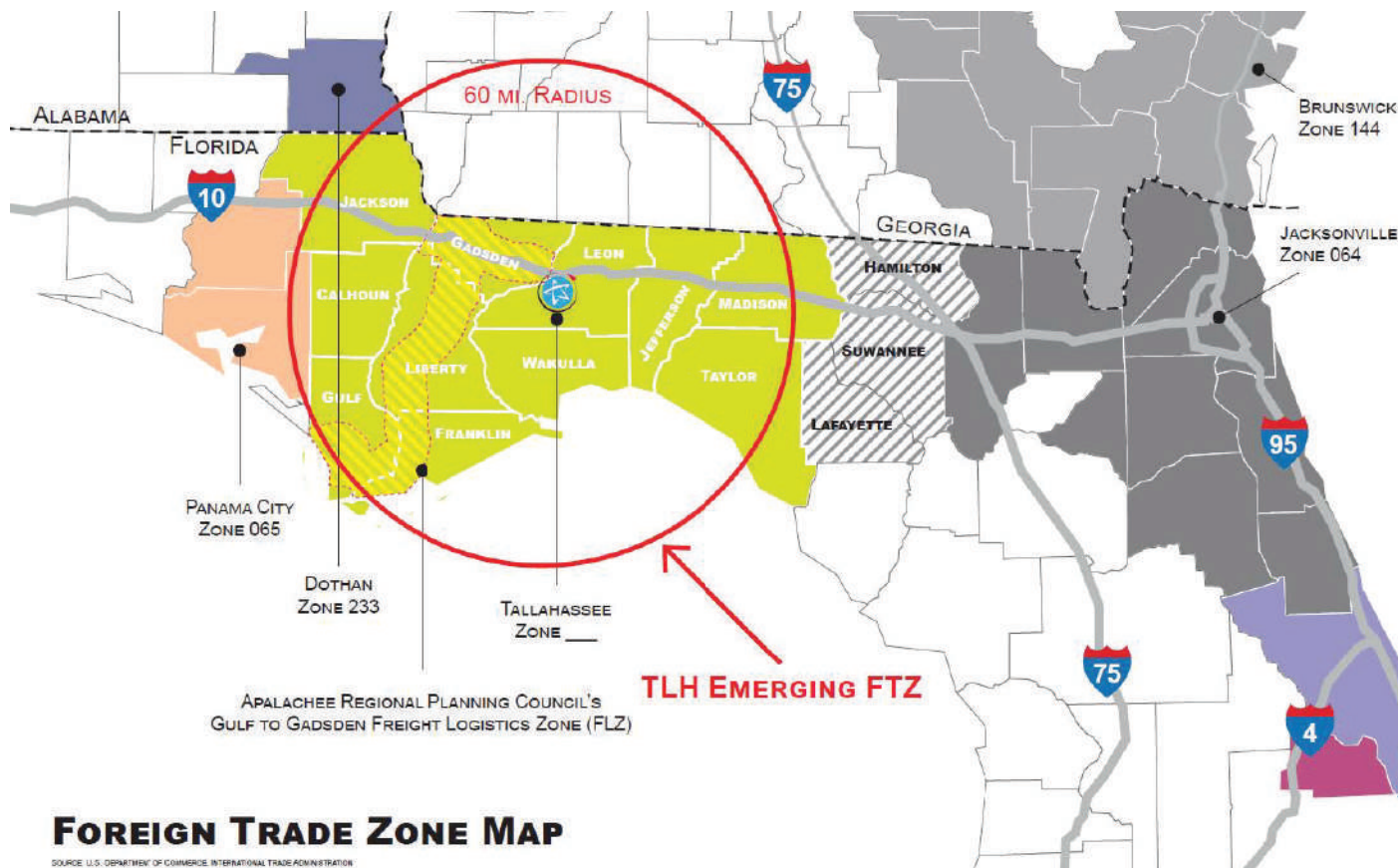


TLH is the site of an emerging International Port of Entry. TLH received conditional approval from U.S. Customs and Border Patrol (CBP) to be designated as a User-Fee Airport. Construction of a 40,000 square foot world-class Federal Inspection Services (FIS) Facility, a \$30.5 million investment, is underway with substantial completion expected by the end of 2024 and operational in 2025. The FIS will meet all CBP design standards for processing up to 200 passengers per hour.

To align with the opening of the FIS, TLH will be home to a fully operational Foreign Trade Zone (FTZ) with CBP oversight that will serve up to eleven (11) surrounding counties from Interstate 75 to Panama City, Florida. The new Zone will encourage international commerce, stimulate the economy, and bolster the Northwest and North Central Florida Region's global market competitiveness. As a significant catalyst for economic growth, the Zone is projected to create more than 1,600 jobs over the next ten (10) years and generate over \$300 million in annual economic impact once full maturity is reached in 2034.



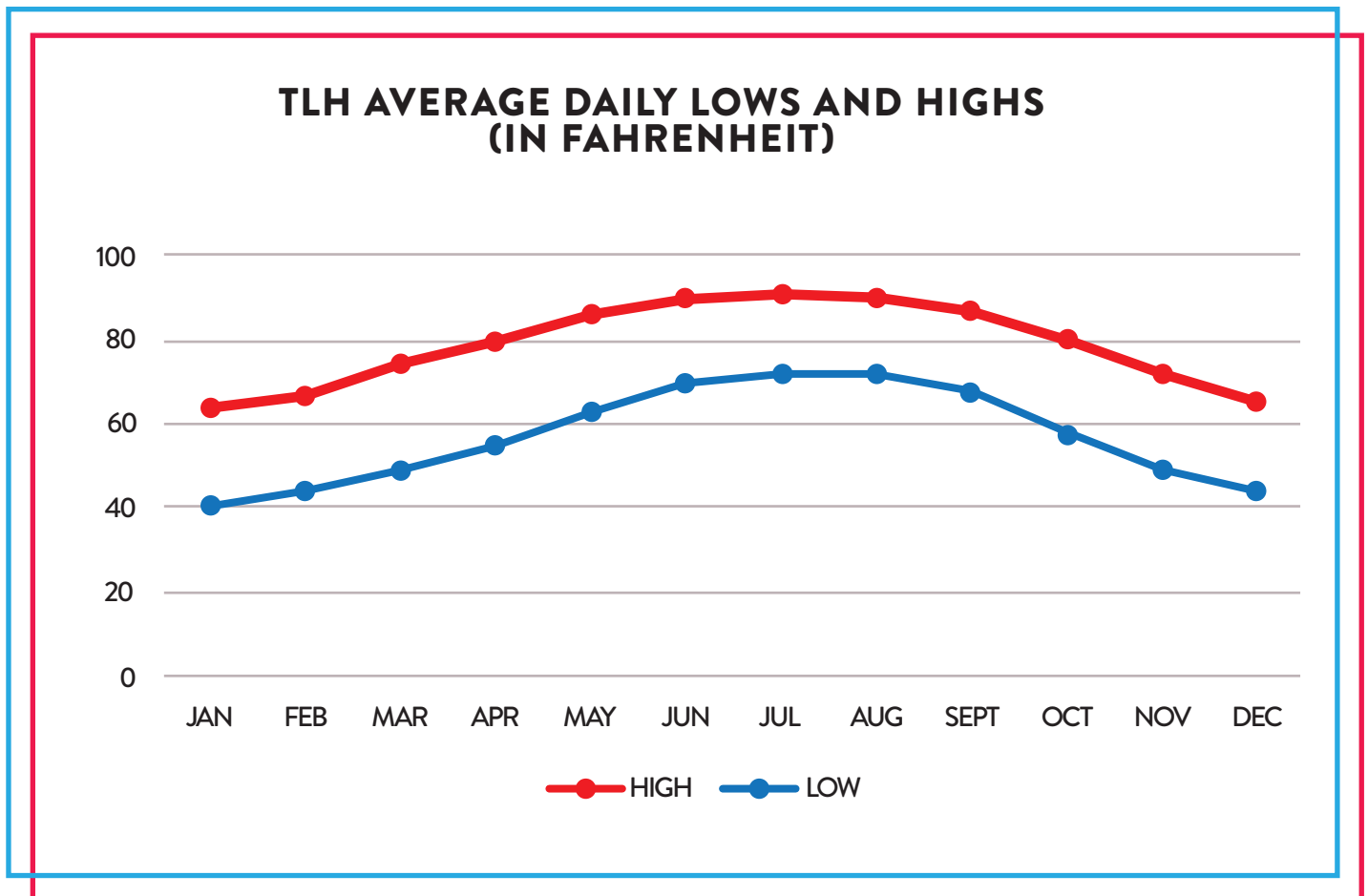
# FEDERAL INSPECTION SERVICES (FIS) FACILITY AND FUTURE FOREIGN TRADE ZONE (FTZ)



# WEATHER CHARACTERISTICS

Normal temperature at TLH ranges from a low of 45 to 60 degrees Fahrenheit in winter to a high of 78-85 degrees Fahrenheit in summer. Average monthly high and low temperatures for TLH are shown in the chart.

TLH has excellent wind speeds for aircraft operations with wind speeds below 10 knots 99.5% of the time for all-weather conditions and 99.3% of the time for IFR conditions. Wind speeds are below 16 knots 99.1% of the time for all-weather conditions and 99.8% of the time for IFR conditions.





Tallahassee offers a major talent pipeline with the colocation of two (2) premier research universities, Florida State University (FSU) and Florida A&M University (FAMU), as well as Tallahassee Community College (TCC) and Lively Technical College (Lively). TLH is located within five (5) miles of FSU, FAMU, TCC, and Lively. These educational partners have ensured that transportation, freight, and logistics companies are supported at all levels by providing a highly skilled workforce. With a commitment to build the local talent pipeline, more of the 70,000 college students who live here are choosing to stay and start their lives in the Tallahassee community, building on an already strong workforce.

## OUR PEOPLE

### **Most educated County in Florida**

47.1% of people 25 and older in Leon County and 50.3% within the city limits of Tallahassee have a bachelor's degree or higher.

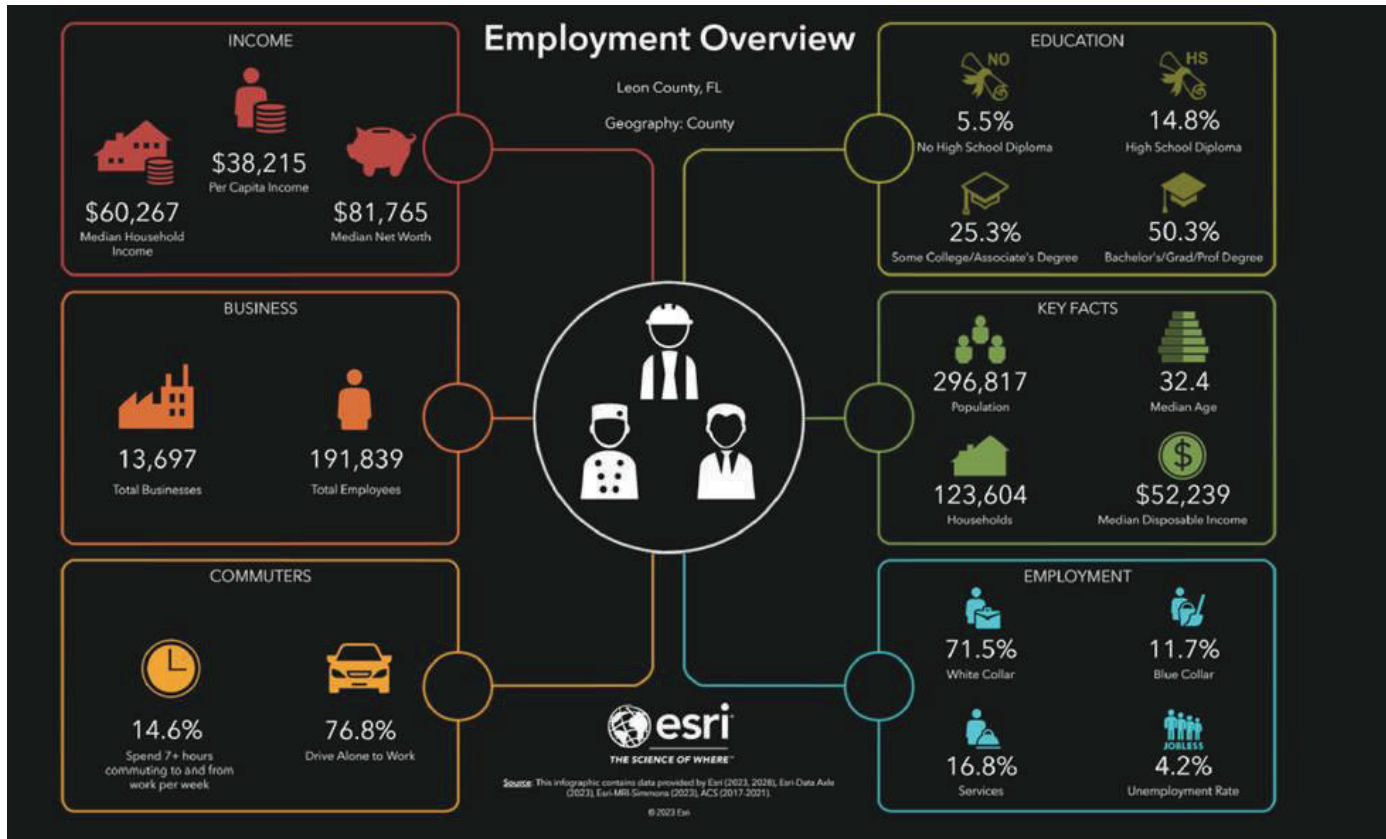
### **Lowest Median Age in Florida**

The median age of our citizens is 32.4 years.

### **Labor Force: 194,000**

The Tallahassee MSA labor force's average annual growth rate is around 0.7% yearly.

# EMPLOYMENT OVERVIEW - LEON COUNTY



# RESEARCH & DEVELOPMENT HUB



Applied Sciences & Innovation

Professional Services & IT

Target  
Industries

Manufacturing & Transportation/Logistics

Health Care

Tallahassee is home to a thriving research and development community. TLH is located only three (3) miles from Tallahassee’s Innovation Park, North Florida’s premier research and development park. Innovation Park includes over seventeen (17) buildings and houses thirty (30) organizations ranging from university research facilities to specialty manufacturing companies and state and federal government research spaces.

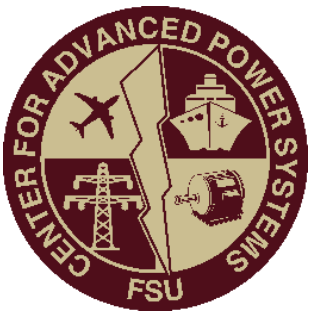
Notably, Tallahassee is considered the “Magnetic Capital of the World.” Innovation Park is home to the National High Magnetic Field Laboratory (MagLab), funded by the National Science Foundation and the State of Florida. The MagLab is the largest and highest-powered magnet lab in the world and the only facility of its kind in the United States. Danfoss Turbocor, a global leader in oil-free centrifugal compressors for the HVAC industry, chose Florida’s Capital as its North American headquarters in 2011. The Florida Center for Advanced Aero-Propulsion (FCAAP), specializing in wind tunnel research, is also located in Innovation Park.

# COMPETITIVE ASSETS

Tallahassee boasts strong scientific innovation resources, with twenty-eight (28) preeminent university research facilities, specialty manufacturing companies, cutting-edge firms, and top-tier institutions of higher learning, as well as state and federal government research facilities.



FAMU-FSU  
College of Engineering





## Amazon

Amazon.com, Inc. has selected Leon County, Florida to house a new 3,200,000 square-foot robotics fulfillment center.

- Largest recruitment project to date
- Created over 1,300 new jobs, for a total of \$451 million in economic impact
- Estimated Capital Investment: \$250,000,000



## Danfoss

Danfoss is the leading manufacturer of oil-free compressors and the pioneer of the Danfoss Turbocor(R) compressor - the world's first, oil-free, magnetic-bearing compressor for the HVAC industry.

- Two expansions; 360 new permanent jobs, for a total of \$270.8 million in economic impact.
- Estimated Capital Investment: \$43,000,000



## Philips MRI

Philips, one of the world's leading MRI magnet manufacturers, is partnering with Tallahassee-based MagCorp and the National MagLab to develop a new MRI magnet that will make MRI imaging more affordable, accessible, and sustainable for undeveloped & developing countries.

# TALLAHASSEE COMMUNITY LIFE

- Florida's Capital City
- Voted by HGTV as one of "The Top Best Mid-Size Cities in the United States" (2023)
- Proximity to Emerald Coast Beaches (less than one hour from Bald Point State Park)
- Magnetic Capital of the World
- #10 Best City in the South (Southern Living Magazine, 2020)
- #17 Most Educated City in the U.S. (WalletHub, 2020)
- Best Cities for Jobs and Wage Growth in America (Milken Institute, 2019)
- Top 10 Cities for Career Opportunities (Smart Asset, 2019)
- One of Most Educated Cities in America and Most Educated City in Florida (JobsEQ)
- Two Major Research Universities – Florida State University & Florida A&M University
- Ecotourism: Over 700 miles of greenways and trails for hiking, biking, riding, and paddling
- Sports Tourism: Athletic Venues Generate an Estimated \$190.0M in Economic Impact
- Business-Friendly Climate/Corporate Tax Exemptions
- Below Average Cost of Living (C2ER, 2020)
- Ten Best Places to Get a Fresh Start (Livability, 2019)
- Cost of Living Index 2.9% Below National Average (Source: Council for Community and Economic Research)
- Housing Costs 7.8% Below National Average (Source: Council for Community and Economic Research, 2019)
- LeMoyne Chain of Arts Festival Ranked #1 in "100 Best Fine Art & Design Shows" (Sunshine Artist Magazine)
- Top 100 Places to Live (Livability, 2019)



Florida A&M University



Florida State University



Tallahassee Community College



# AIR CARGO INCENTIVES

TLH is committed to the development of successful air service partnerships and to expanding its support of air cargo services worldwide.

Landing fees will be waived for the first year for new cargo entrants.







FOR ADDITIONAL INFORMATION CONTACT:  
**AIRCARGODEVELOPMENTTEAM@TALGOV.COM**



3300 CAPITAL CIRCLE SW, SUITE 1 | TALLAHASSEE, FLORIDA 32310  
PHONE: (850) 891-7802

**TLHAIRPORT.COM**